

**APPENDIX F**  
**Traffic and Noise**  
**Related Information**

# Kansas Department of Transportation

TO: Corky Armstrong, P.E., Road Design Engineer

FROM: David Schwartz, P.E., Statewide Planning Engineer *DJS*

DATE: March 20, 2007

SUBJECT: Additional Forecasted Link Volumes for SLT (10-23 K-8392-01)

Below please find additional requested volumes for the South Lawrence Trafficway (SLT) project. These forecast volumes were derived from the same travel demand model as those provided to the original Environmental Impact Statement, namely the 1998 Lawrence-Douglas County QRS II model, which is still the current endorsed travel model for this metropolitan area. The process for deriving this numbers is consistent with the forecast process for the original EIS.

Three model scenarios were used for the analysis: a scenario where nothing was constructed in the study corridor (No-Build), one where the SLT was constructed along 32<sup>nd</sup> Street, and one where the SLT was constructed along 42<sup>nd</sup> Street. The link geometry for these scenarios accurately reflects the roadway configurations for each of the study alternatives. These scenarios were run with both 1998 (calibrated) volumes and forecast 2025 land use.

No-Build	1998	2025
Louisiana: 31st to Wakarusa R.	800	14400
Haskell: 31st to Wakarusa R.	3000	15200
31st St: La. to Haskell	12800	25900

32nd St. Alignment B	1998	2025
Louisiana: 31st to Wakarusa R.	1000	15900
Haskell: S of SLT interchange to Wak.	2200	16700
31st St: La. to Haskell	7900	19500

42nd St. Alignment A	1998	2025
Louisiana: 31st to Wakarusa R.	700	16000
Haskell: 31st to SLT	5100	20900
31st St: La. to Haskell	6600	19600
Haskell: S of SLT interchange	3700	17800

RECEIVED

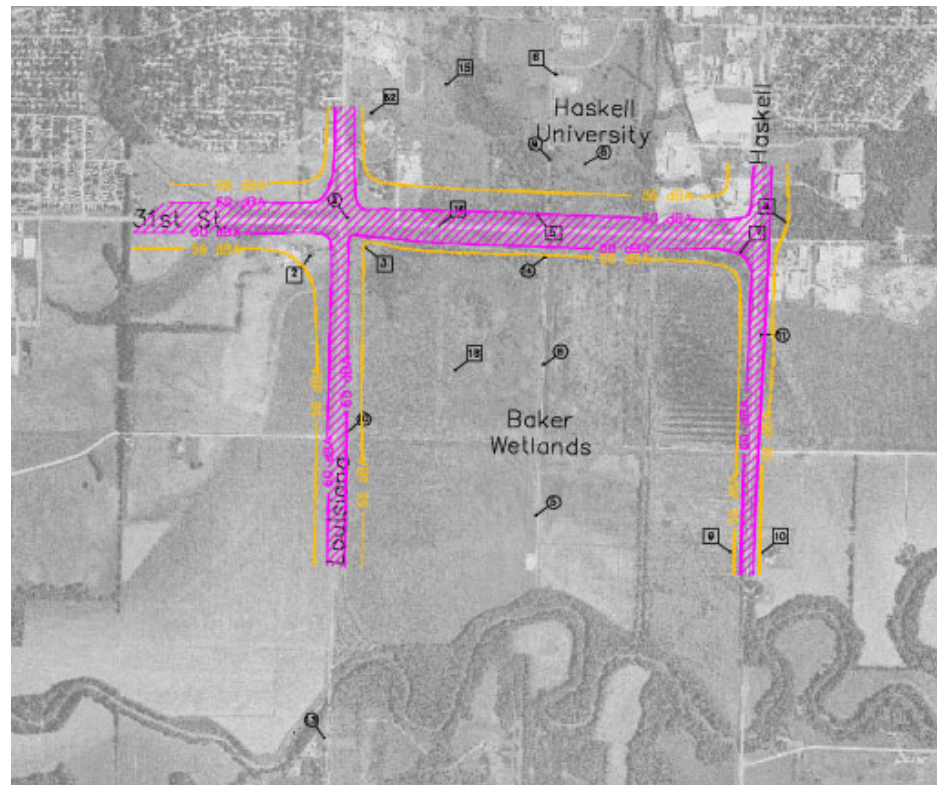
MAR 20 2007

BUREAU OF DESIGN  
STATE ROAD OFFICE

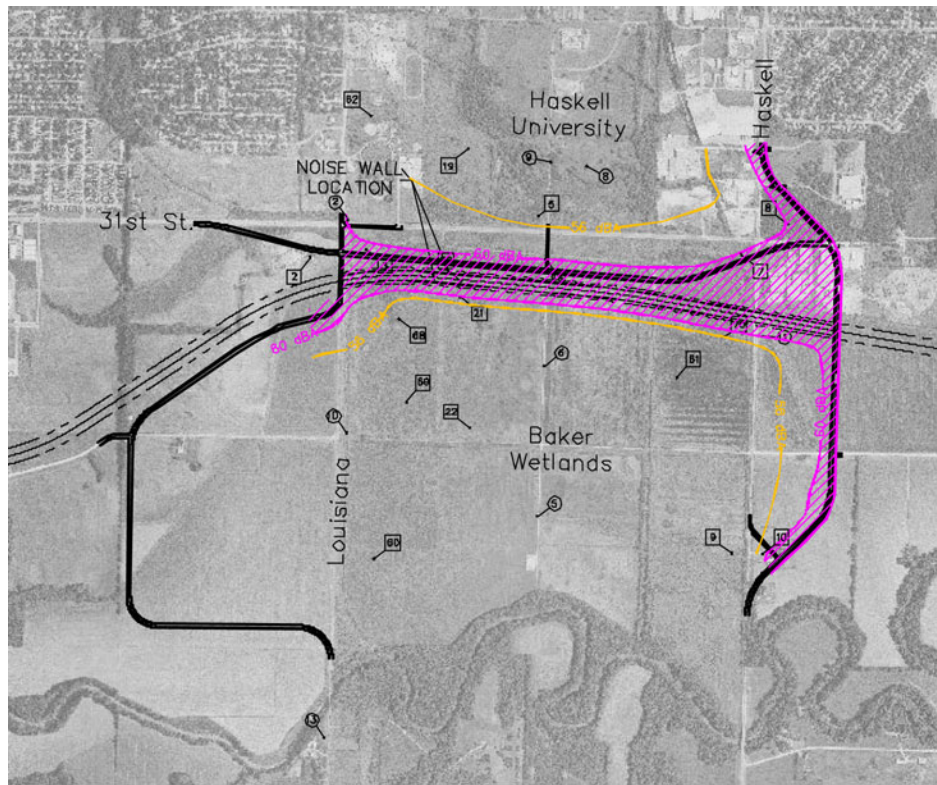
Des. Engr. Road Bridge Contracts	Coord. Sec. Engr. Sec. Landscape Sul. Sc. File
---	--

*RA*

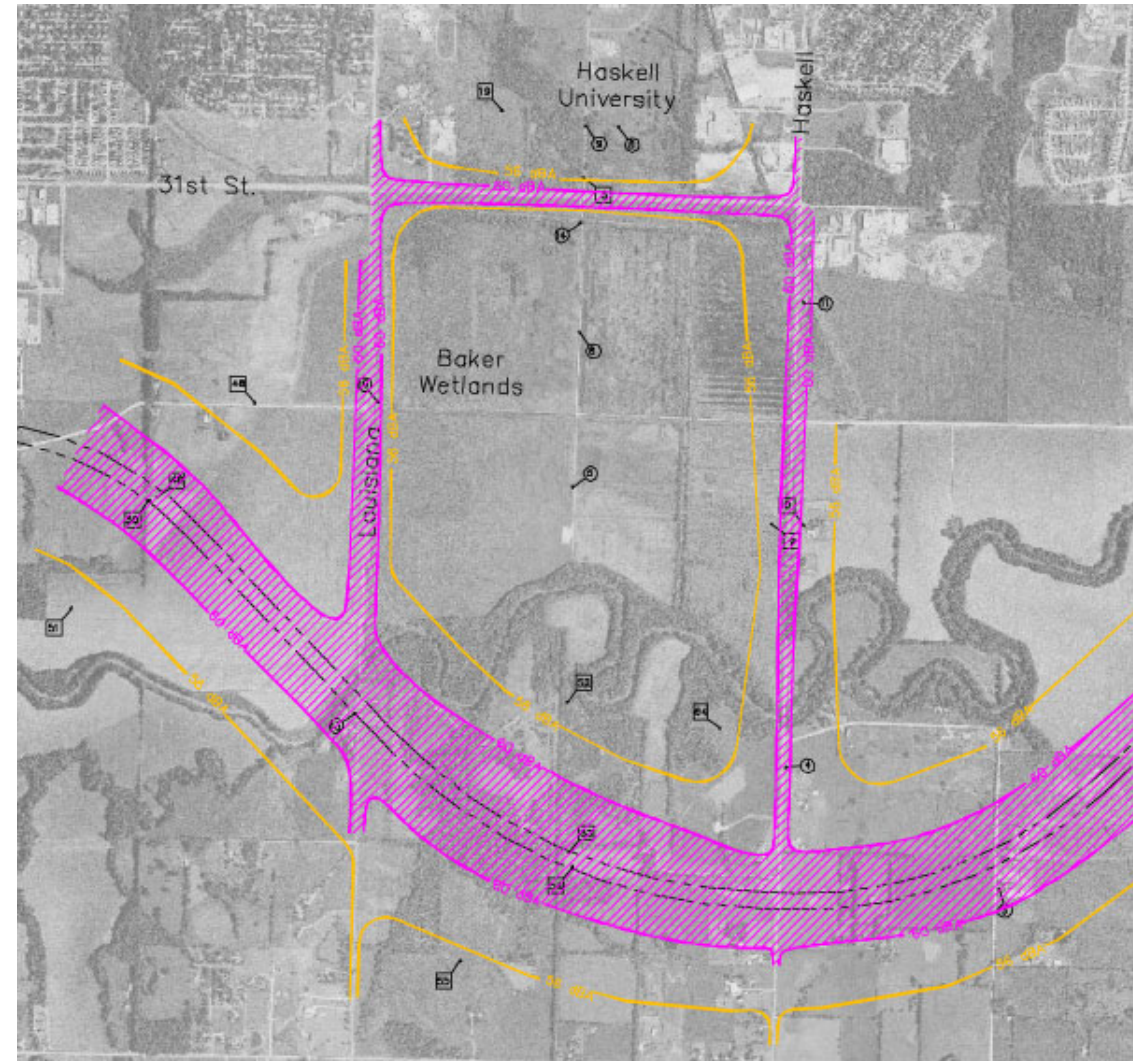
No-Action Condition



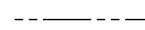


32nd Street Build Condition with Noise Walls

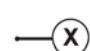
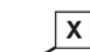


42nd Street Build Condition



LEGEND

-  SLT Location
-  60 dBA Noise Contour
-  56 dBA Noise Contour

-  Field Receptor Location
-  Modeled Receptor Location



Sound Level Contours